



深圳市晶峰达电子科技有限公司

ShenZhen JinFengDa Electronic Technology Co., Ltd.

地址:深圳市龙岗街道 电话:0755-29206918, 13798528768

网站: www.jfd-ic.com 邮箱: info@jfd-ic.com QQ:402431824

DL3305 三位半时钟 IC

产 品 说 明 书

DL3305

3.5-DIGIT 12/24 - HOUR FORMAT WATCH

FEATURES

- 5 functions: month, date, hour, minute and second
- Selective alternation of time-date display mode
- One-touch correction of time error within ± 30 seconds
- 4-year calendar
- 2-switch sequential operation
- LCD test
- Selectable 12/24-hour format

FUNCTIONS

- Single-chip CMOS constructions
- Drives 4 - digit duplexed LCD
- Low power consumption
- Colon display
- 32,768Hz crystal controlled operation
- Single 1.5V battery operation
- On-chip capacitive voltage
- Debounce circuitry on switch inputs
- Protection against static discharge
- Built-in crystal oscillator input capacitor
- Trimmer capacitor included

DESCRIPTION

The XH8090K is low threshold voltage, ion implanted poly-Si gate CMOS integrated circuit which provides all signals to drive a duplexed 4 - digit liquid crystal display with colon (Fig. 1). 32.768kHz frequency from a crystal controlled oscillator is divided to provide second, minute, hour, date, and month information. 12-hour or 24 hour format can be selected. Phase controlled segment outputs and two-phase controlled back plane outputs are provided for direct drive of the duplexed LCD.

ABSOLUTE MAXIMUM RATINGS ($T_a = 25^\circ\text{C}$)

Characteristic	Symbol	Value	Unit
Supply Voltage ($V_{DD1} - V_{SS}$)	V_{DS1}	- 0.3 ~ + 2.0	V
Supply Voltage ($V_{DD2} - V_{SS}$)	V_{DS2}	- 0.3 ~ + 4.0	V
Operating Temperature	T_{OPR}	- 20 ~ + 75	$^\circ\text{C}$
Storage Temperature	T_{STG}	- 55 ~ + 125	$^\circ\text{C}$

ELECTRICAL CHARACTERISTICS ($T_a = 25^\circ\text{C}$, $V_{SS} = 0\text{V}$, $V_{DD} = 1.5\text{V}$; unless otherwise specified)

Characteristic	Symbol	Test Condition	Min	Typ	Max	Unit
Operating Voltage	V_{DD1}		1.2	1.5	1.8	V
Operating Voltage	V_{DD2}		2.4	3.0	3.4	V
Supply Current	I_{DD}	Without Load		0.8	1.5	μA
Input Low Voltage	V_{IL}			V_{SS}	$V_{SS}+0.3$	V
Input High Voltage	V_{IH}		$V_{DD}-0.3$		V_{DD}	V
Switch Activation Current	I_{SW}	$V_{IN} = V_{DD}$	0.1	0.5	3	μA
Oscillator Start Voltage	V_{OSC}	Within 5 sec			1.45	V
Oscillator Stop Voltage	V_{OSF}				1.15	V
Oscillator Input Capacitor	CI			20		pF
Oscillator Output Capacitor	CO			20		pF
Oscillator Frequency	F_{OSC}			32,768		Hz
DC - DC Conversion Frequency	V_{CON}	$C1 = C2 = 0.1\mu\text{F}$		512		Hz
LCD Frequency	FD			32		Hz
Switch Debouncing Time	TD				62.5	mS

DL3305

3.5-DIGIT 12/24 - HOUR FORMAT WATCH

APPLICATION

- Two switch (D and S) are required to control all display and setting of function. This inputs are pulled down by internal resistors.
- The voltage doubler circuit is formed by connecting 0.05 μ F to 0.1 μ F capacitor from 'CAP' PAD to '1K0' PAD and from 'V_{DD2}' PAD to 'V_{SS}' PAD.
- The oscillator circuit is formed by connecting crystal from 'OI' PAD to 'OO' PAD.
- The circuit substrate is electrically connected to V_{SS}, the most negative voltage. The preferred assembly method is to connect die area to V_{SS} using a conductive die attach.

DISPLAY CONTROL

• Standard Display

Normal XH8090K displays HOUR in digit 1, 2 and MINUTE in digit 3 and 4. In this state colon flashes at 1Hz rate.

Depression of the D switch in normal display state will cause month to be displayed in Digits 1 and 2, date in Digits 3 and 4, with colon off. Month and date will continue to be displayed for 2 seconds after the D switch is released. Then hour and minute are displayed again.

Two momentary depressions of D switch within 2 seconds in the normal display state will cause second to be displayed in Digits 3, 4 and the Digit 1 and 2 are blanked with colon not flashing. Depressing the S switch in this state resets and holds the second counter until S switch is released and minute counter is either advanced or remains unchanged, depending upon whether the second counter is greater or less than 30 seconds.

Depressing the D switch in this state returns the display to hr: min state.

• Alternating display

This mode is selected by activating the set switch (S) in the normal display mode. In this mode, hr: min is automatically displayed alternately with month date. Each is displayed for two seconds.

The S input must be activated five times to return to the normal display mode and depressing the D switch in this alternating mode will cause the second display mode to appear.

3.5-DIGIT LCD FORMAT

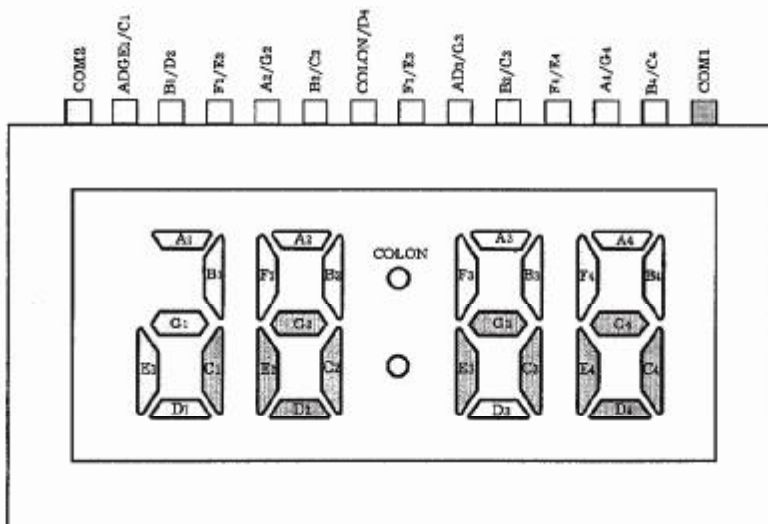


Fig. 1

DL3305

3.5-DIGIT 12/24 - HOUR FORMAT WATCH

SETTING PROCEDURE (Fig. 2)

Time/calendar setting is accomplished by using the S switch to enter and return from the setting state. The D switch is used to advance the function at a 2Hz rate.

The function to be set is displayed the only one while setting state.
The detailed setting procedure is as follows.

a. Alternating display state

Depressing the S switch in normal display state calls MONTH set state and the display shows MONTH in the digit1 date)

b. Month

Depressing the S switch in the alternating display state calls up the month set state and the display shows month in the Digits 1 and 2. The month counter can be advanced at a 2Hz rate by depressing the D switch.

c. Date

The next depression of the S switch will select date set state the display shows date in Digits 3 and 4. The date can be advanced in Fig. 2.

d. Hour

The next depression of the S switch will select hour set state and the display shows hour in Digits 1 and 2 and A(AM)/P(PM) in Digits 4.

The colon flashes at a 1Hz rate. The hour can be advanced as Fig. 2. The 12-hour format or 24-hour format can be select alternately on every 24-hour cycle during hour advance.

e. Minute

The next depression of the S switch will select minute set state and the display shows minute in Digits 3 and 4 and the colon flashes at a 1Hz rate. Depressing the D switch advanced the minute at 2Hz flashing and the watch suspends it's time-keeping function.

f. Hold mode

Then watch enters the hold state with the depressing of the S switch. In this state the display shows hour in Digits 1 and 2, minute in Digits 3 and 4 and non-flashing colon. (Normal display state).

NOTE

If minute is not changed in minute set state, the watch will not enter the hold state but will automatically revert to the normal display state.

The carry signal from any proceeding counter during operation is not accepted except for second reset.

DL3305

3.5-DIGIT 12/24 - HOUR FORMAT WATCH

SETTING PROCEDURE (Fig. 2)

Time/calendar setting is accomplished by using the S switch to enter and return from the setting state. The D switch is used to advance the function at a 2Hz rate.

The function to be set is displayed the only one while setting state.
The detailed setting procedure is as follows.

a. Alternating display state

Depressing the S switch in normal display state calls MONTH set state and the display shows MONTH in the digit1 date)

b. Month

Depressing the S switch in the alternating display state calls up the month set state and the display shows month in the Digits 1 and 2. The month counter can be advanced at a 2Hz rate by depressing the D switch.

c. Date

The next depression of the S switch will select date set state the display shows date in Digits 3 and 4. The date can be advanced in Fig. 2.

d. Hour

The next depression of the S switch will select hour set state and the display shows hour in Digits 1 and 2 and A(AM)/P(PM) in Digits 4.

The colon flashes at a 1Hz rate. The hour can be advanced as Fig. 2. The 12-hour format or 24-hour format can be select alternately on every 24-hour cycle during hour advance.

e. Minute

The next depression of the S switch will select minute set state and the display shows minute in Digits 3 and 4 and the colon flashes at a 1Hz rate. Depressing the D switch advanced the minute at 2Hz flashing and the watch suspends it's time-keeping function.

f. Hold mode

Then watch enters the hold state with the depressing of the S switch. In this state the display shows hour in Digits 1 and 2, minute in Digits 3 and 4 and non-flashing colon. (Normal display state).

NOTE

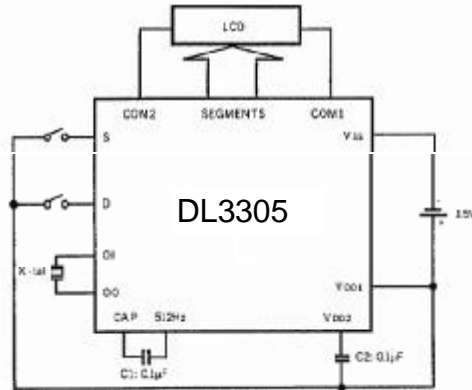
If minute is not changed in minute set state, the watch will not enter the hold state but will automatically revert to the normal display state.

The carry signal from any proceeding counter during operation is not accepted except for second reset.

DL3305

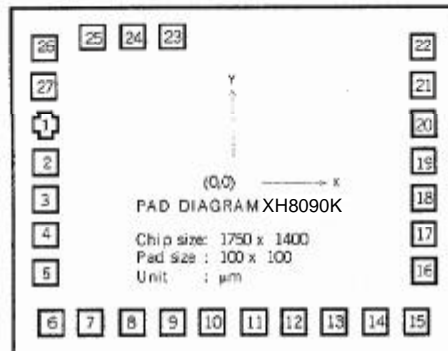
3.5-DIGIT 12/24 - HOUR FORMAT WATCH

APPLICATION CIRCUIT



* Quartz Cristal Parameter
 $F_p = 32,768\text{Hz}$
 $CL = 12.5\text{pF}$
 $C1 = 4\text{fF}$
 $CO = 2.5\text{pF}$
 $R_s = 35\text{K}\Omega$
 $Q = 35,000$

PAD DIAGRAM



PAD LOCATION

Pad No.	Pad Name	X	Y	Pad No.	Pad Name	X	Y	Pad No.	Pad Name	X	Y
1	VDD1	-745	240	10	F3/E3	-85	-570	19	CO	745	90
2	VDD2	-745	90	11	COL/D4	75	-570	20	VDD1	745	240
3	D	-745	-60	12	B2/C2	235	-570	21	512Hz	745	390
4	COM1	-745	-210	13	A2/G2	395	-570	22	CAP	745	540
5	B4/C4	-745	-360	14	F2/E2	555	-570	23	TEST	-240	586
6	A4/G4	-725	-570	15	BC1/D2	715	-570	24	TEST	-395	586
7	F4/E4	-565	-570	16	ADEQ1/C1	745	-360	25	TEST	-550	586
8	B3/C3	-405	-570	17	COM2	745	-210	26	GND	-745	540
9	AD3/G3	-245	-570	18	OI	745	-60	27	S	-745	390